



**Blast your Way to Success...**

Sand Casting Foundry for  
Intellectual Property Against Wear



[www.adeptmetatech.com](http://www.adeptmetatech.com)

# About Us



## Establishment Deck

The Great journey of our foundry business has started in 1985 with very limited resources, but our dedication spark up into us & then started a Cast Iron foundry with a pit furnace.

The surge of overall growth is our motto. The wide product range helps in clinch, the Brand Value.

## About Adept Metatech

Our foundry business, Seeded in the year 1985. It has been since decades we are serving to various industries. Adapting new changes as per the decades change, for the betterment. By Increasing our product list, we have a varied number of thing to serve to the Industries.

Premium quality materials are used in the production of our products. The quality-control is maintained with our utmost experienced and qualified staff and necessary tests are also performed for the quality. For providing the perfect product to the client all necessary testing are performed like chemical check, hardness testing, micro image analysis, tensile strength and many more. Our varied product range includes ferrous alloys which mainly consist different grades of high alloyed white cast irons.

Adept Metatech manufacture alloy cast products that can be utilized in Road and building construction machineries, stone crusher plants, Cement manufacturer, power plants.

## Our Reliability :



Anil Founders has emerged into a innovational period in their manufacturing history. Advancement in production techniques and machinery, led Anil Founders re-emerging as Adept Metatech. A company with a solid foundation and a new vision. With the New Gen tools and Decades of experience, Adept Metatech is on the verge that will let reach their name go beyond the sky.



## Adept Metatech's principles :

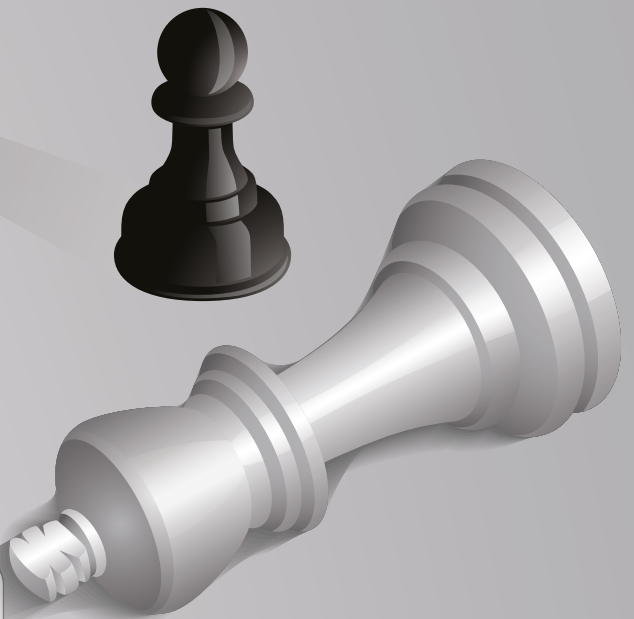
Be relational, maintain the highest level of integrity, deliver quality products, and keep our commitment as strong as at the end it feels as beginning. Our team is dedicated to reserving these core values and work ethic that define Adept's environment.

Adept's philosophy of excellence and vision of vitalizing the nation's strength. We wish to restructure foundry at it's peak in India, casting the best tomorrow. Adept Metatech aims to become one of India's finest and the best diversified foundry company delivering outstanding value to our multiple customers, employees, and the communities in which we work.

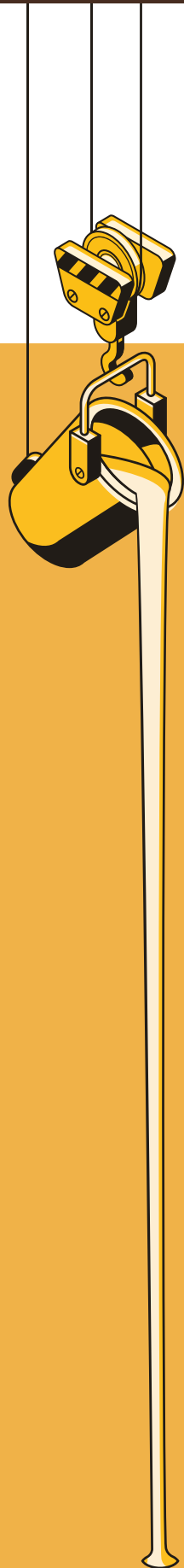
**Adept Metatech** practices a strict policy of promoting, improving and maintaining client satisfaction. In a highly competitive market scenario, Adept Metatech is committed to stand out by providing our clients with best and distinctive services. We have achieved and retained its leading reputation among first-rate companies in the fields of wear resistance white cast iron casting.

**Adept Metatech** takes close control on chemical composition.

By strategically undertaking quality management at the core of its operations, Adept Metatech has bound together the full value chain of a foundry industry, which are client satisfaction, work assurance & healthy environment with dynamic attitude & finest quality outcomes.







Philosophy of Adept Metatech is to carved it's name in foundry industry and cater to the best of our ability everyday. We believes in taking honesty and integrity to another level. In order to create safe environment, we consider the environmental impact of our work and endeavour to protect and remediate the environment.

One of Adept Metatech's key focus area is the Value and Strict adherences to safety practices to protect the very foundation of Company & its employees. Our active approach in creating safe environment through our behaviour based safety policy. It practices around a zero-harm viewpoint towards people, communities & environment. Although Adept Metatech consistently enforces a standard of conduct in Health , Safety & Environment (HSE).

It believes that every accident and injury is preventive.

Maintain the highest standard of quality on each and every product.

Products in budget and on-time.

Exceed our Client's expectations.

The Adept has over-arching measures to consistently monitor performance and aims to empower employees to live its corporate values.



**Adept Metatech** has visionary Management Team, competent and well qualified professionals, and efficient manpower, technologically superior machinery, all working together to maintain the highest degree of professionalism across the entire organization.

We have consistently essayed a prominence in alloy casting, moulding and has portrayed a astonishing image in nationwide development through the multitude projects completed successfully within the time frame.

The meaning of excellence is effectively demonstrated in our finest structures, using the most modern technique practices at par with the best foundry.

## Our Proudful TEAM

### Number of Employees 40+

#### Professional and Technical Staff

- Metallurgy Engineer
- Skilled pattern gating system developer
- Maintenance engineer
- Laboratory engineers
- research and development team

#### Skilled Team

- Qualified furnace operators
- No bake sand mixer operators
- Skilled machine operates
- Trained Grinding workers
- Trained crane operator



## CSR



**Adept Metatech** is dedicated to maintaining a clean environment and as a consequence. Believes this will create the ability to operate in a disciplined and sustainable manner over the long term which is fundamental to maintaining a competitive advantage and honouring the yields of corporate governance.

**Adept Metatech** adopts Corporate Social Responsibility (CSR) by which it gives back to the world around them, to help make society and the environment a better place. Business's impact is largely thought to be felt by 'society', such as consumers, communities, employees & employers and industries.



# Industries We Serve



**Building Construction  
Equipments**



**Road Construction Equipments**



**Mining**



**Cement Manufacturers**



**Stone Crusher**



**Power Plants**



**Fertilizer Plants**

## Our Core Expertise

**01** Expertise in Heat Treatment



**02** Expertise in Microstructure Analysis



**03** Close Control on Chemical Composition



**04** Personal Customer Service in Part Design




**05** Proper Moulding with Appropriate Gating System



# Our Foundry



A large, vertical, orange-tinted image of industrial machinery, likely a part of a foundry, occupies the left side of the page. It shows various mechanical components, including what appears to be a large metal block and some structural supports.

Our foundry is all together aided with lot many sections which has ability to handle a huge volume of material inflow without compromising on the quality aspect.

**Our foundry has mainly 6 different sections.**



Moulding Section



Boxless Moulding



Metal Box Moulds



Melting Sections



Shot Blasting



Fettling

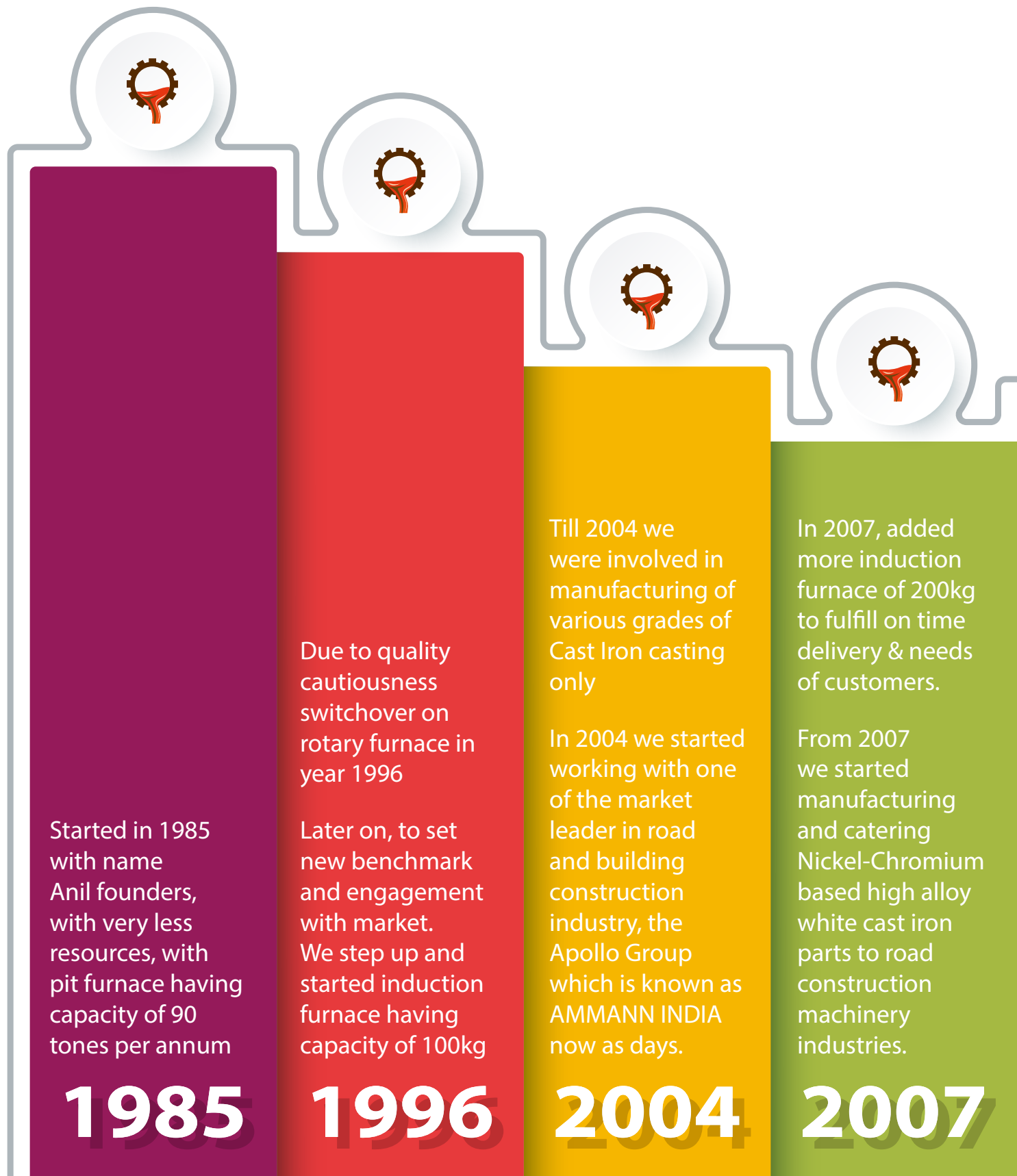


Heat Treatment

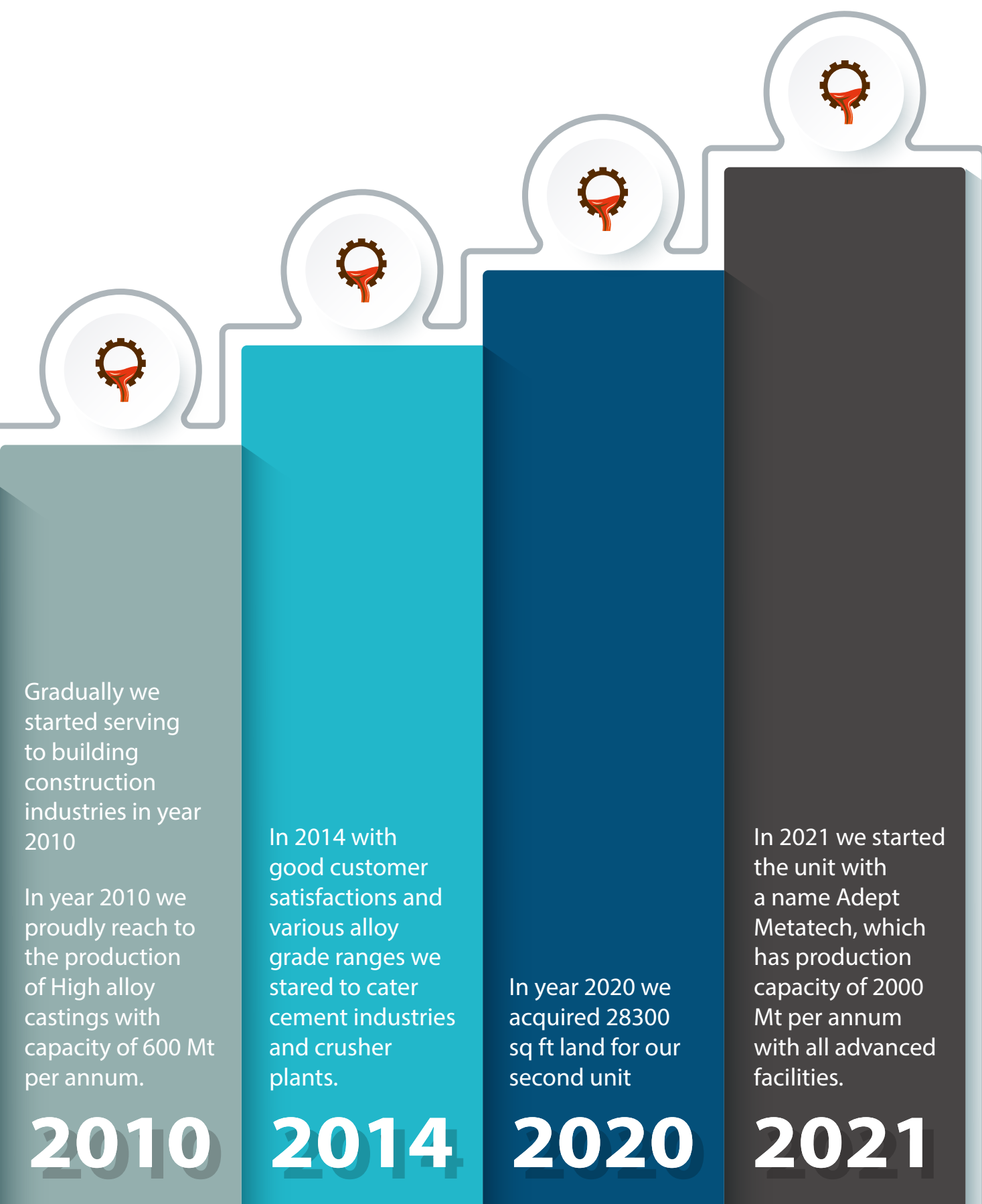


Inspection & Paint

# Our Success Run







## Machinery for moulding

Continuous sand mixer machine for two part  
No-Bake moulding

- Make : J K Foundry Engineers
- Capacity : 6 TPH

Sand reclamation automated plant

- Make : J K Foundry Engineers
- Capacity : 6 TPH
- Shakeout
- Sand cooler classifier
- Knockout
- Pneumatic sand conveyor

Compaction table size 600 mm x 800 mm.

Overhead silo for reclaim sand with 17MT storage capacity.

Underground new sand storage tank with 100MT storage capacity.

Analog type mould hardness tester.



## Machinery for melting

- With 600 Kg POT Capacity 250 KW 1000 HZ C/s IGBT base induction furnace
- With 300 Kg POT Capacity 175 KW 2000 HZ C/s IGBT base induction furnace
- With 100 Kg POT Capacity 100 KW 1500 HZ C/s IGBT base induction furnace
- With 100 Kg POT Capacity 100 KW 1500 HZ C/s IGBT base induction furnace
- Drum type tilting Ladle with 150 Kg capacity



## Machinery for supportive operations

- Shot blast machine (Indablator Nesco make)

**Spinner Hanger type machine with two door 1.5 MT hanging Capacity**

**Overhead crane (Shiva project make)**

- With Capacity of 7.5 MT
- With Capacity of 5 MT

**Air compressor total 40Hp**

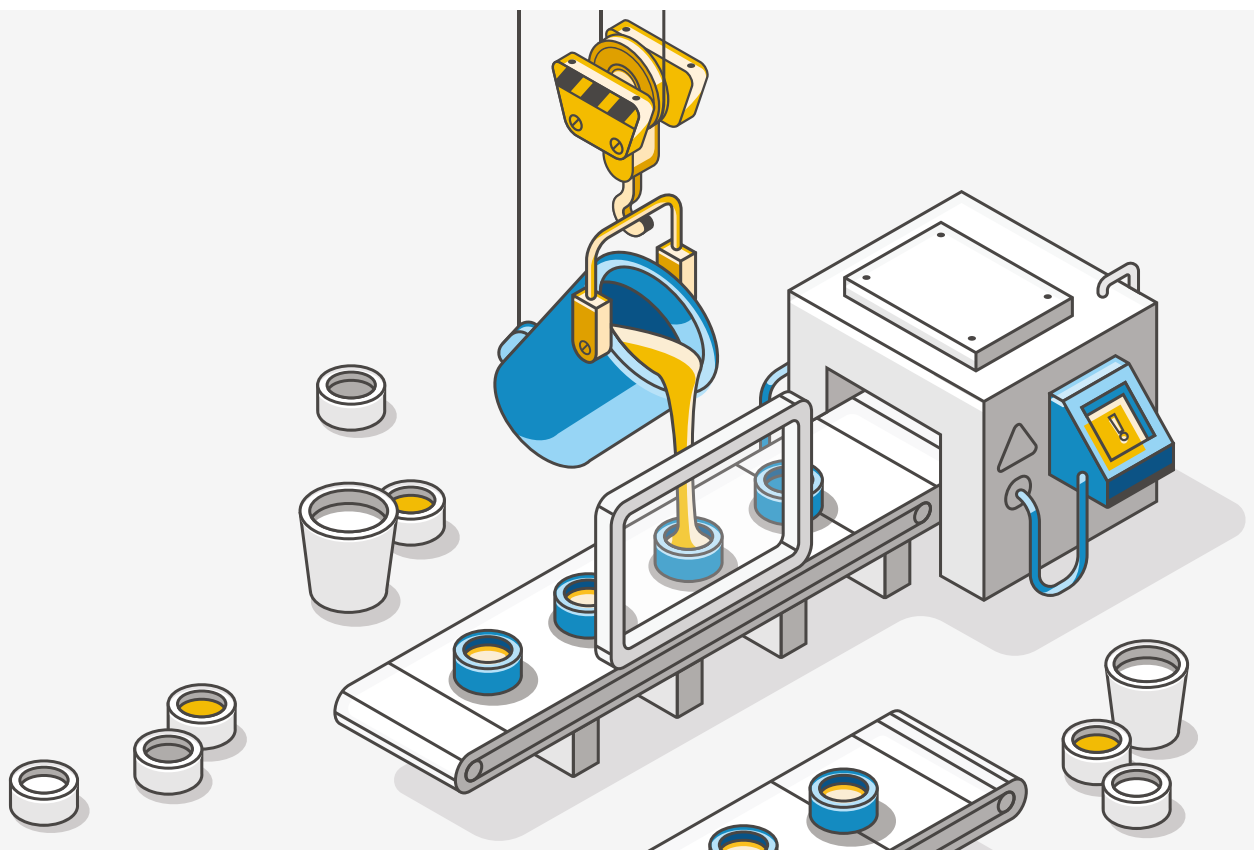
**Flexible Shaft Grinders**

**Paint shop**



## Machinery for heat treatment

- 100KV capacity electric coiled heating furnace with 1.5 MT capacity (2 Nos)
- PID controller with auto programmer/ graph chart facility and a multipoint temperature recorder
- 10KV capacity electric coiled heating furnace for research and development (2 Nos)
- Quenching facility with specially designed axial fans





## Metallurgical laboratory equipment

- Digital Rockwell Cum Brinell Hardness Tester (FIE make)
- Universal sand strength measuring machine  
Compatible for:
  - Sand tensile strength
  - Sand compression strength
  - Sand Transverse strength



## Melting Inspection Machinery

- Alloy chemical composition measuring machine
  - Spectro check machine (Spectro German make)
- Portable temperature indicator (Suyash make)
- Carbon Silicon analyser (Suyash make)





**AMMANN**



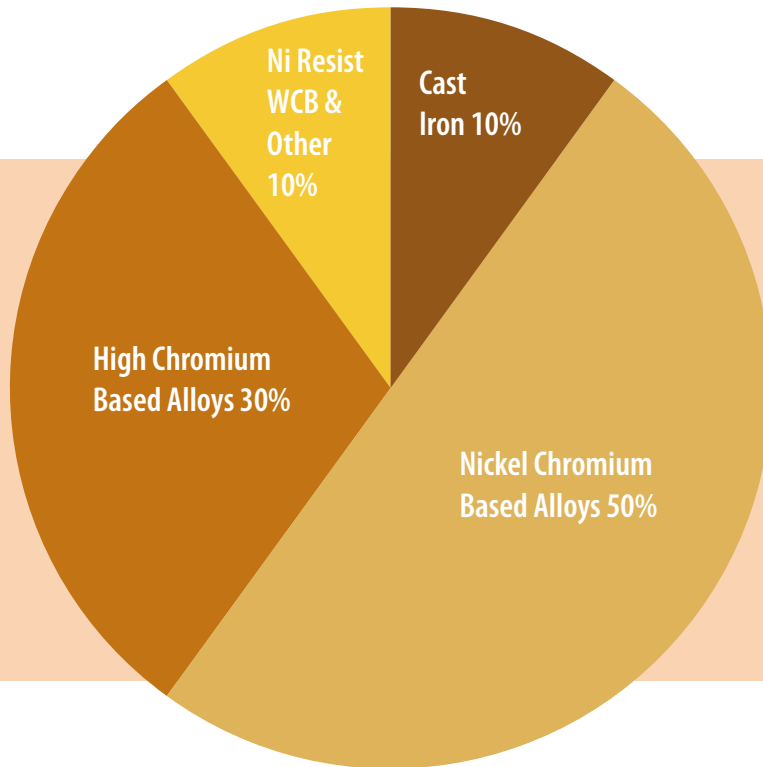
**VÖGELE**



**Vibrant**  
Asphalting Simplified



- Ammann India Private Limited
- Marini India Private Limited (Fayat Group)
- Voegelé India (John Deere Group)
- Alltech Industries India Private Limited
- Macons Equipment India Private Limited
- Venus Equipment
- Navdish Engineers
- Swelore Engineering Private Limited
- Vibrant Construction Equipments Private Limited
- Nilang Asphalt Equipments Private Limited
- Amruta Infratech Private Limited
- Picson Construction Equipments Pvt. Ltd.
- Coimbooss Engineers
- Parker Plant India Private Limited



## Annual Production 1050 MT

- Cast Iron 10%
- Nickel Chromium based alloys 30%
- High Chromium based alloys 50%
- Ni resist, WCB & other 10%

**Annual Turnover 12+ Cr.**



## Production Area

**Factory: 28300 sq. ft.**

**Plant: 15600 sq. ft.**

**Total Connected Power Load  
450+200 kv**











www.abhishek.info



**ADEPT**  
— METATECH —

[www.adeptmetatech.com](http://www.adeptmetatech.com)

**Office & Factory :**

Block No. 52, Nr. Gopinath Estate,  
Parikh Packaging Road, Vasna Chacharwadi (Moraiya),  
Changodar, Dist. Ahmedabad, Gujarat - 382213

[info@adeptmetatech.com](mailto:info@adeptmetatech.com)  
[adeptmetatech@gmail.com](mailto:adeptmetatech@gmail.com)

**Contact Person :**

**Dhaval Patel** +91-9601804686  
(B.E. Metallurgy)

**Harsh Patel** +91-9974903616